

LOVE WIRRAL

MAGAZINE



JANUARY 2021
Issue 105

Monthly Business & Community magazine delivered across Wirral

I'm
FREE
Pick Me Up!



www.love-wirral.com 
ONCE YOU HAVE READ ME PLEASE PASS ME ON TO SOMEONE ELSE!

Call: **0151 513 1279** or email: **info@love-wirral.com**

VIKING QUEST

18 HOLE ADVENTURE GOLF

**OPEN
7 DAYS**



**A fun day out
for all the family**

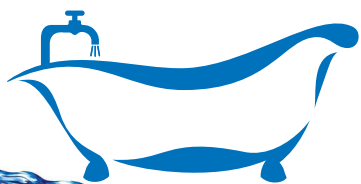


Moreton Hills Golf Centre, Tarran Way South,
Moreton, Wirral CH46 4TP

0151 3631873

www.vikingquestadventuregolf.co.uk





**DISCOUNT
BATHROOM
CENTRE**



Bespoke Bathrooms & Wet Rooms

Open to the Trade & Public

**“SHOWERING SOLUTIONS
FOR YOUR EVERY NEEDS”**

DO YOU HAVE YOUR OWN BATHROOM FITTERS?

Bring your quotes to us for unbeatable prices on our supply only!

TRADE AND PUBLIC WELCOME! SAVE £££'s WITH US



**DO YOU HAVE
DIFFICULTY SHOWERING?**

*** WE CAN GET YOU
BACK SHOWERING
WITH FITTING
IN LESS THAN
24 HOURS!**

* Subject to survey

**Mobility Bathrooms
with Easy-Access
Showers and Baths**

We provide a total solution
to our customers' needs.

Walk-in Showers

All of our walk-in showers have
special features designed to
make your bathing safer, more
comfortable and relaxing.

**MONTHLY
MANAGER
SPECIALS**

ASK IN STORE
FOR DETAILS
*T&C's apply.

**MASSIVE
OFFERS IN
DECEMBER 2020**

Bring your quotes to
us and we'll
beat them!

**WE WON'T BE
BEATEN ON PRICE!**

INTERNET PRICES ON THE HIGH STREET • MONTHLY MANAGER SPECIALS

Image for illustration purposes only

Design | Supply | Installation

Vitra GROHE mira mira NUANCE nuie Hudson Reed *Style without compromise*

366 Hoylake Road, Wirral CH46 6DF (above Moreton Carpet Centre)

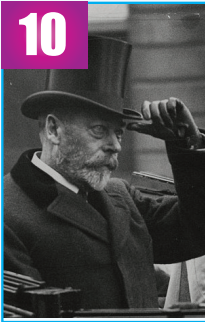
Tel: 0151 677 6721 / 07855 015366

Email: info@discountbathroomcentre.co.uk | www.discountbathroomcentre.co.uk

Monday-Friday: 9:00am – 4:30pm | Saturday: 9:00am – 4:00pm | Sunday: Closed

WHAT'S IN THIS MONTHS LOVE WIRRAL MAGAZINE

10



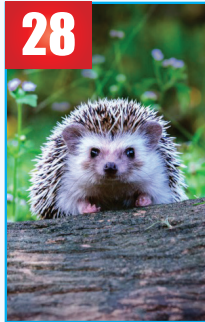
This Month In History

14



Auto Review by Tony Yates

28



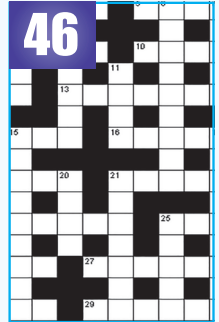
Helping Hedgehogs in the Garden

45



Port Sunlight River Park

46



Puzzle Corner

Love Wirral The Magazine of Choice for Businesses in Wirral.

Do You Know?	8
This Month In History	10-11
Auto Review by Tony Yates	14-15
Be Prepared Winter Tyres	19
Community News	20
Rotary Club Of Birkenhead	21
International Walk Your Dog Month	26
Helping Hedgehogs In The Garden	28
Please Support Local Charities	36
Bridge Community Farms	41
Yesterday's Wirral Photos	43-44
Port Sunlight River Park	45
Puzzle Corner	46
Enjoy a New Home for the New Year at Wirral Care Home	47
WISHING YOU A HEALTHY NEW YEAR	

**Cover Photograph
Burton Village**



Hello dear friends!

With a heavy heart I have to tell you that my lovely husband Allan passed away suddenly as we were going to print for our December edition.

We started the magazine together almost 9 years ago, Allan was the designer and editor, he loved every minute and helped as many people as he could.

Our son Mike and I will be carrying on the magazine, we have received such wonderful support and love from our family, friends and clients and thank you from the bottom of our hearts.

Please please follow the government guidelines on COVID-19, Allan had underlying issues we were not aware of, we wouldn't want this to happen to you.

Keep up to date with us on facebook, twitter & visit us at: www.love-wirral.com

Best Wishes

Maxine



Circulation of this FREE magazine is distributed to South Wirral Whitby & all of Wirral areas.

Part of Local Media Publications Limited

Registered Office: 1st Floor 12 Church Road, Gatley, Cheadle, Cheshire, SK8 4NQ Company Number: 10081143

"Love Wirral" is produced by an independent organisation; which is not connected to any other organisation, publication or groups.

All material is copyrighted and no part of this publication may be reproduced or transmitted without the written permission of the copyright holder.

Please note that we do not endorse any products or services of any advertisers. All advertisements and their content are accepted in good faith. Responsibility for copyright and the accuracy of the information provided lies with the advertiser.

FREE home visits with samples & no pressure

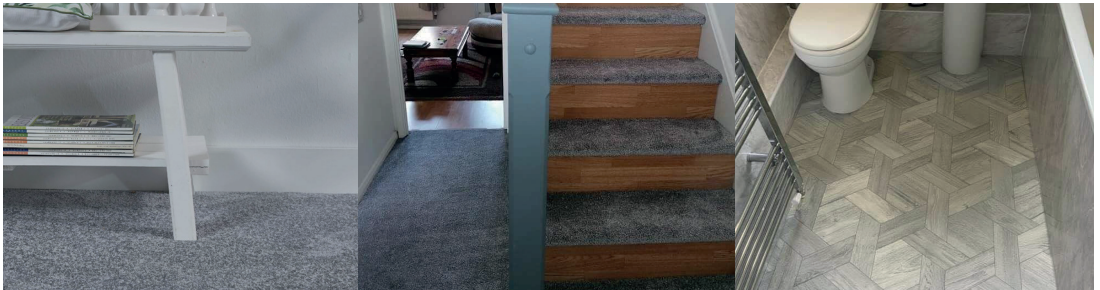
Friendly, expert fitters

INTRODUCING PAY SMART CARPETS PLUS

The home of **0% interest** flooring in the North West. Huge range of carpet, vinyl and laminate flooring at great prices and on flexible payment options



WHY WAIT FOR THAT NEW HOME FEELING, CONTACT US TODAY AND LET US WORK SOME MAGIC ON YOUR HOME!



FREE underlay, grippers and door bars with every purchase

Pay us back over up to 4 years with **low monthly payments** and **0% interest**

Fast and professional fitting teams across the North West



PAYSMARTPLUS
CARPETS • VINYL • LAMINATES

★★★★★
rated company!

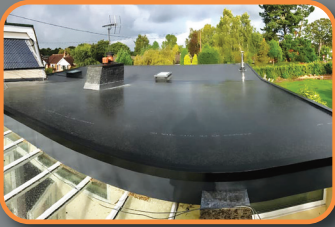
Call us on **0330 041 2999** or visit **www.paysmartcarpetsplus.com**



ALLMIGHTY ROOFING

Your Local Flat Roofing Specialists

Complete Re-Roofs/Commercial Roofing/ Facias & Guttering



Firestone Flat Roofing System

- ✓ 20 year guarantee
- ✓ Superior durability
- ✓ Seamless sheets in one piece
- ✓ Very low life-cycle cost
- ✓ Flame-free & easy installation
- ✓ High flexibility & elongation
- ✓ Environmentally friendly



Meet the owner

- 15 Years Experience
- Level 3 Site Carpentry NVQ
- Level 1 Construction NVQ
- Level 2 Slate & Tiling NVQ
- Licensed Firestone Contractor
- Fully Insured



Call 01244 637121
www.allmightyroofing.co.uk



cheshire joinery services ltd

Bespoke hardwood windows and doors



*We wish all our customers, past and present
a very Merry Christmas and Happy New Year!*



Come and visit our showroom, call us to book an appointment!

Unit 1b, Barrowmore Estate, Gt Barrow, CH3 7JA

www.cheshirejoineryservices.com

info@cheshirejoineryservices.com

Tel: 01829 741751

DO YOU KNOW?

1. When you first meet people it is common to forget their names - a phenomenon called the 'next-in-line' effect. This is because people are too worried about themselves, and what they'll say next, to focus on remembering the names of people they're introduced to.
2. Until 1948, 7-Up contained "lithium citrate", a mood stabilizer used to treat bipolar disorder.
3. Actor Frankie Muniz suffers from long term memory loss and doesn't remember being on Malcolm in the Middle. 
4. Pirates probably didn't wear eyepatches because of a missing eye; it's much more likely that they were keeping one eye ready to see in darkness, so that they could adjust quickly when going below deck.
5. The first woman to cycle round the world learnt to ride a bike a few days before she set off.
6. A cyberchondriac is someone who scours the Internet looking for details of their illnesses.
7. A study using MRI scans showed that the brains of people who exercise moderately look 10 years younger than those who don't.
8. Scientists at the University of Alberta spent seven years working out that human urine contains 3,079 different chemical compounds.
9. Research has shown that dogs actually like the silly, high-pitched voice their owners use to talk to them..
10. Sweden has a ski-through McDonald's
11. 1 in 3 children can use a tablet before can speak, a survey found. 
12. King Abdullah of Saudi Arabia was shocked when Queen Elizabeth II drove him around her estate, since women couldn't drive in his country.
13. 'Kennedy' means 'ugly head' in Gaelic.
14. You can get a Stand-up comedy master's degree at the University of Kent.
15. In Bolivia, llama droppings are used to purify water 
16. The term "pipe dream" is a reference to the insane dreams people have when smoking opium.
17. Eight men own the same wealth as the poorest half of the world.
18. Before he was a famous musician, Johnny Cash was a military code breaker for the US Air Force.
19. Don Gorske was recognized by the Guinness World Records book in 2016 when he ate his 28,788th Big Mac. 
20. A whole orange will float on water, but a peeled orange will sink.
21. The Mandarin word for 'film' literally translates as 'electric shadow'.
22. John F. Kennedy's Eternal Flame in Arlington National Cemetery has only gone out twice since 1963.
23. While filming the movie "Entebbe," about a plane being hijacked, a plane was actually hijacked and landed at the airport. They filmed the real hostages being released and edited it into the movie.
24. The Moon gets hit by over 6,000 pounds (2800 kg) of meteor material per day. 
25. On average, the Japanese sleep two hours a night less than the Chinese.
26. Pink Floyd's Dark Side of the Moon album was on the Billboard charts for a total of 741 consecutive weeks from 1973 to 1988.
27. A study found that those who consider their spouse or partner to be their best friend get about twice as much life satisfaction from marriage as others.
28. Prisoners on Alcatraz always had hot showers so they didn't get acclimatised to cold water and try to escape by swimming.
29. A party boat carrying sixty men and women capsized in Texas in 2012 after all the passengers rushed to one side as the boat passed a nude beach. 
30. The only difference between fog and mist is visibility: if you can't see more than 100 metres ahead, it's fog, not mist.
31. Prior to 1868, eating meat from four legged animals had been prohibited in Japan for more than a thousand years.
32. Al Pacino turned down the role of Han Solo. 
33. Russell Crowe turned down the role of Morpheus in The Matrix.
34. The Dutch army had only one tank during WWII.
34. Japanese manufacture Toto built a motorcycle that runs on poop. 



Sherlocks

Big Enough To Manage — Small Enough To Care



Dear Residents

At Sherlock Estate Management we specialise in the day to day running of apartment blocks, large and small both locally and throughout the region. We are a friendly company and have been established since 1986 in the centre of Liscard, which is located in Wallasey, Wirral.

We are pleased to have an opportunity to offer you our services as estate managers. We do appreciate considering a management company can be a delicate decision but we can assure you that we are **100%** confident that we can help you. With this in mind we would be more than happy to call and see you, or you are more than welcome to visit us here at our office. Our time is your time.

We feel residential management requires a personalised approach and given the opportunity, we will endeavour to familiarise ourselves with you and your property and match our service to your requirements, this is something we pride ourselves on.

The items below illustrate a number of day to day tasks that we can administer on your behalf:

Service Charge Collection
Legal Matters
General cleaning
Gardening
Window Cleaning
Decorating
Maintenance
Insurance Policies
Annual accounts
Neighbourly issues

We can arrange new or retain existing contractors and can help with as much or as little as you need.

Sherlock House, Manor Road, Wallasey, Wirral, CH45 4JB

Telephone: 0151 638 8160

www.sherlockestatemangement.co.uk

email: hello@sherlockestates.co.uk

5TH MONTH THE HISTORY

This feature each month will give true interesting facts from years gone by. See what you remember that happened in your lifetime.

THIS DAY IN HISTORY FOR THE MONTH OF DECEMBER

1863



JANUARY 10 1863

The London Underground, which opened in 1863, was the world's first underground railway system. The Metropolitan line ran between Paddington and Farringdon. More than 30,000 passengers tried out the Tube on the opening day and it was hailed by the Times as "the great engineering triumph of the day!"

JANUARY 5 1972

President Richard Nixon signed a bill approving \$5.5 billion over six years to build and test the NASA space shuttle.

The space shuttle represented a giant leap forward in the technology of space travel.

Designed to function more like a cost-efficient "reusable" airplane than a one-use-only rocket it launched capsules, the shuttle afforded NASA pilots and scientists more time in space with which to conduct space-related research. NASA launched Columbia, the first space shuttle, in 1981.



JANUARY 20 1936

King George V of England died at age 71.

The grandson of Queen Victoria, he had reigned since 1910. He renamed his line as the House of Windsor, breaking his association with the family's German line of descent.

He was succeeded by his son King Edward VIII who abdicated in December and was succeeded by George VI.



1976



JANUARY 21 1976

The Concorde supersonic jet began passenger service with flights from London to Bahrain and Paris to Rio de Janeiro, cruising at twice the speed of sound (Mach 2) at an altitude up to 60,000 feet.

The supersonic jet made its last commercial passenger flight, traveling at twice the speed of sound from New York City's John F. Kennedy International Airport to London's Heathrow Airport on 24 October 2003.

JANUARY 3 1924 - British Egyptologist Howard Carter found the sarcophagus of Tutankhamen in the Valley of the Kings near Luxor after several years of searching.

JANUARY 24 1972 - Japanese soldier Shoichi Yokoi was discovered on Guam after he had spent 28 years hiding out in the jungle not knowing World War II had long since ended.

JANUARY 30 1649 - King Charles I of England was beheaded for treason by order of Parliament under the direction of Oliver Cromwell, leader of the Puritan Revolution.

HAVE YOU BEEN THE VICTIM OF MEDICAL NEGLIGENCE?

We all put our trust in the medical judgement and information we are given by qualified health professionals and practitioners, but sometimes their advice or treatment can result in things going wrong.

There are many points from the first doctor's appointment to treatment options where errors can be made, and unfortunately these cases are on the rise.

Our Solicitors specialise in all areas of medical negligence including:

- Brain Injuries
- Anaesthesia related complications
- Cancer Misdiagnosis
- Failure to treat Diabetes
- MRSA Negligence Claims
- Orthopaedic Injuries
- Child Injuries
- Birth Defects
- Misdiagnosis of Fractures
- Spinal and Neck Injuries

ENQUIRE TODAY...

CALL 0151 306 3694 OR VISIT:

PHOENIXLEGALSSOLICITORS.CO.UK



PHOENIX SOLICITORS

ICare Meals on Wheels

VISIT OUR WEBSITE TO ORDER YOUR MEALS ONLINE



- Hot Lunchtime meal service, meal plated up if needed.
- Tea time Treat, which is a sandwich pack delivered with your hot meal ready for tea time.
- Frozen Meal delivery service.
- Home Shopping service.
- Wellbeing Check.

See website for full details of all services
icarecuisine.co.uk



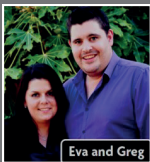
All staff fully police and DBS checked.



Place an order online to be entered into our Monthly prize draw

Try a complimentary Hot Lunchtime meal and sweet delivered to your home.

Call 0845 6041125 | www.icarecuisine.co.uk

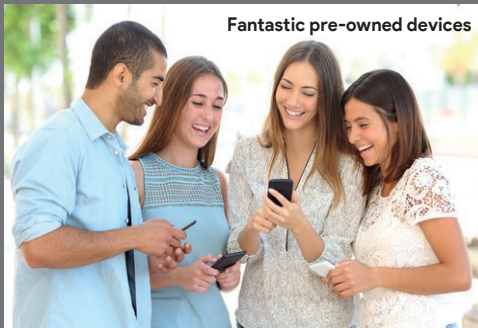


Eva and Greg

fone.care®



Fantastic pre-owned devices



Up to £40 OFF
pre-owned and refurbished
phones and tablets. Limited stock.

Your local mobile technology experts helping you in Heswall since 2011

- Professional phone repairs
- Professional iPad repairs
- Unlocking
- Quality accessories
- Refurbished phones & tablets
- Data transfers
- Tuition & Device set up
- Tech support & Expert advice
- We buy in phones & tablets

Pop in today.

0151 342 2004 | www.fone.care | open Mon to Fri 9.15am - 6pm and Sat 9am - 4pm

AutoReview

by **Tony Yates**

Keeping you motoring

Honda Civic Type R GT 2.0 VTEC Turbo MT



When you look at the Type R GT – it looks very aggressive and if I'm being honest, it looks like a bit of a 'yobbo'. The aerodynamic styling for one almost makes you stop in your tracks and take in the depth of what's in front of you. I'm not kidding – it's been a strange week. But to be fair – it does look like it's straight from the race track with its big rear spoiler and wide arches. Most people just stood there and looked - but others just wanted to drive it.

Standard equipment on the Type R GT includes; Adaptive Damper System, Limited Slip Differential, Multi-link Rear Suspension, Capless Refuelling, LED Headlights, Smart Entry & Start, Sports Seats, Triple Exhaust, Dual Zone Climate Control, Blind Spot Information, Wireless Charging and a lot more.

On the Road

The Type R GT delivers exceptional road holding on any road surface, even when I was really trying to get the Type R GT out of shape into the corners under normal road conditions it was just so planted - all I can remember thinking is 'dam this thing is really good' then there are the brakes that are just as staggering.

Again – slide the +R button and the whole car changes. I'm not talking about a bit more torque here and there – I am talking about the whole car morphing into something else.

Slide the button if you dare – and the response of the various chassis and drivetrain are activated, where the engine responsiveness is heightened, the torque map is changed, the steering becomes more responsive and the whole car becomes something else. I have never in all my time as a motoring writer felt anything like it.

Power and Efficiency

The might of the Type R GT is powered by a 320PS turbocharged 2.0 VTEC petrol engine that has blistering performance and can sprint from 0 to 62 mph in just 5.8 seconds – making it what can only be described as a fast accelerating front-wheel drive hatchback.

Also, let's not forget that it has a top speed of 169 mph which will blow your mind for all sorts of reasons. To be honest, I have never seen anything move so quickly on the road. Well, not with number plates anyway!

Thinking back, it's been a while now since I have driven a car where both parts of the engine and chassis felt so moulded together – and if the pairing of those two is just not good enough for you – then Honda have done one more thing that will excite your senses that little bit more – the +R mode button.

By sliding that +R mode button you will unleash yet another storm that will intensify the whole driving experience so much more that you will be giddy with excitement and you will immediately need to be locked in a very small room to have a lie-down.

What more can I possibly say – the Type R GT is an epic machine that I cannot possibly fault. If we are talking about pure power, speed and driveability – then the Type R GT wins it for me as it's a very full-on 'catch me if you can' sort of racer. There is no doubt in my mind the new Type R GT will go down as my favourite car of 2020

Price: from £34,820 OTR (GT Spec)

Where will you go?



Hawkes & Wright Ltd

Auto Paint & Body Repair Centre

We are located behind the Neston ATS



- ✓ TRADE WORK
- ✓ RESTORATION
- ✓ CLASSIC CARS
- ✓ INSURANCE WORK
- ✓ ALLOY WHEEL REFURBS
- ✓ MOT WELDING
- ✓ 35 YEARS EXPERIENCE
- ✓ FRIENDLY SERVICE
- ✓ NO JOB TOO SMALL
- ✓ GREAT PRICE - GREAT SERVICE

Our professional service with high professional quality ensures that you get the best job for the best price - every time.
 Email: hawkesandwright@hotmail.com

For a competitive quote and friendly service call us today!



MEMBER OF THE FEDERATION OF SMALL BUSINESSES



[hawkesandwrighttd](https://www.facebook.com/hawkesandwrighttd)



[@BodyShopNeston](https://twitter.com/BodyShopNeston)



[hawkesandwright](https://www.instagram.com/hawkesandwright)

Units 5 & 6 William Court, Buildwas Road, Clayhill Industrial Estate, Neston, Wirral, Cheshire CH64 3RU
 Telephone: 0151 353 1031 | www.hawkesandwright.uk



BMW & MINI SPECIALISTS IN WIRRAL



AC SERVICE £75 inc. GAS



Latest state of the art system. Fully automated



• **DIAGNOSTICS** • **SERVICING** • **TIMING CHAIN** • **AIR CONDITIONING**

Unit 3, Grisedale Road, The Old Hall Estate, Bromborough, Wirral CH62 3QA

Tel: 0151 334 9238

www.skautomotive.co.uk





Quicks



TELEPHONE: 0151 334 1415

£29 M.O.T's
TYRES • TRACKING • EXHAUSTS

SPECIAL OFFER 1
£29 MOT
WITH THIS ADVERT AT
BROMBOROUGH BRANCH!
EXTENDED TO 31.03.21
ALL WORK UNDERTAKEN!

SPECIAL OFFER 2
SERVICE & MOT from £109
WITH THIS ADVERT AT
BROMBOROUGH BRANCH!
EXTENDED TO 31.03.21
ALL WORK UNDERTAKEN!

**BRAND NEW
WORKSHOP**



PLEASE CALL TO BOOK IN 0151 334 1415
AND SPEAK TO STEPHEN KEWLEY

SERVICE CENTRE
AS A QUICKS SERVICE CUSTOMER YOU GET
FREE
Bulbs
FREE
Fluid Top Ups
FREE
Brake Check
FREE
Tyre Check

www.quicksservicecentre.co.uk - Hardnott Road, Bromborough

CCS Croft Car Sales

CROFT CAR SALES SPECIALISTS IN SELLING USED CARS.
Finding the right used car for you is our mission statement; with over 50 used cars & vans in stock, on our site in Bromborough, Wirral, we are sure to find the ideal car for you. We deal with people all across the country, offering vehicles tailor made to suit your needs and budget.

7 REASONS TO BUY FROM US

- 1 12 Months MOT
- 2 3 Months WARRANTY
- 3 Full HPI Check
- 4 Oil & Filter Service
- 5 Fully Valeted
- 6 FREE MOT Test for "LIFE"
- 7 Free Oil & Filter Service for "LIFE"

ALL VEHICLES COME WITH THE ABOVE, ON SCREEN PRICE OVER £1000.
N/B "LIFE" means the duration that you own the vehicle!



Great Part-Ex Deals

Cars Bought for Cash!

Croft Car Sales, Unit 36, Dinsdale Road,
Croft Business Park, Bromborough, Wirral, CH62 3PY

www.croftcarsales.com **07966 773003**



All major credit cards accepted - Finance Available

GAROLLA

ROLLER SHUTTER DOORS



Great For:
 Space Saving
 Kerb Appeal
 Ease of Use
0800 468 1982

THERMALLY INSULATED ELECTRIC GARAGE DOORS



CE Approved

Acoustic & Thermal Insulation



Brush Sealed Rails



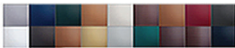
Pay on Completion



Two Remote Controls



18 Colours Available



Free Disposal of your Old Door!

Save £459

Garolla saves you space inside your garage as the Garage Door rolls vertically into a box. This design requires just 8 inches of headroom and allows you to park closer to the door. Remotely control the Door from the comfort of your car with a hold-to-run remote.

LIMITED OFFER - was £1354

NOW ONLY £895
 INC. VAT & FULL FITTING

MADE TO MEASURE, CALL US TODAY

0151 321 1905

07537 149 128

Phone Lines Open 7 Days a Week

- Offer valid for openings up to 2.6m wide & inc: 2 Remote Keys, 55mm White slats, Internal manual Override -



Ear Wax?

Wirral Hear Clear

Mobile ear wax removal service
 We come to you

- Same day service available
- Ear wax removal using micro suction / syringing / irrigation carried out by fully qualified and insured professionals
- Mobile service in the comfort of your own home or workplace
- Wirral and surrounding areas covered. Other areas by arrangement.

Contact us

07762 946 518



wirralhearclear.com

jarilo DESIGN

WIRRAL WEB DESIGN

PRICES STARTING FROM

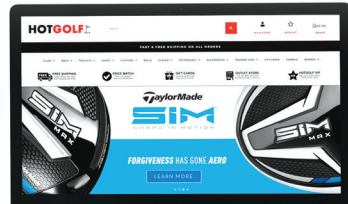
£500

PLUS ONGOING, DEDICATED SUPPORT

www.jarilo.co.uk

0151 601 4695

sales@jarilo.co.uk



Be prepared with strong Winter tyres

Get your strong Winter tyres from a professional. It's never too early to prepare when your safety is involved. Don't worry, we aren't trying to force we thought it would be good to get you prepared for the colder months to come with tips for your strong Winter tyres.

Strong Winter tyres will benefit you and keep you safe. We understand best that the last thing you want to be doing is changing your tyres at different points in the year and spending money on different tyres for different weather conditions but trust us when we say it is 100% worthwhile and it will protect you and all your passengers.

You'd rather be driving safely with strong Winter tyres wouldn't you?

Obviously, the main idea of getting Winter tyres is so that you have the best tyres for Winter in all conditions

but other reasons include:

Preserve the life of your tyres

Save you money in the long run

Peace of mind knowing you have the appropriate tyres.

To protect yourself, your passengers and most of all your tyres the best decision is to get the most appropriate tyres for each season. You won't have to worry about spending a fortune or fitting the tyres yourself because at Stone Tyres we have quality, cheap Winter tyres in St Helens which our professionals can fit there and then for you.

Be as prepared as the professionals when it comes to tyres

Don't leave it till last minute or not bother at all, it's always good to be prepared, especially when the experts in strong Winter tyres are here to give you a helping hand. All you need to do is contact Stone Tyres to discuss the best tyres for Winter and we can have you sorted within no time. Whether it's now or in a couple of months time we will be ready and waiting to provide you with cheap Winter tyres in St Helens to ensure you safe, quality driving in Winter conditions.



COMMUNITY NEWS

Have Your Say - Tell Us & We'll Print It!
Email us @: info@love-wirral.com

Big
Garden
Birdwatch
29-31 January 2021

What will you see in Merseyside during the Big Garden Birdwatch? World's largest garden wildlife survey returns, 29-31 January 2021



Over its four decades, Big Garden Birdwatch has highlighted the winners and losers in the garden bird world, and this year, the RSPB are calling on Merseyside residents to take part.

In 2020, nearly half a million people took part, counting almost eight million birds over a three-day period.

For many people, garden birds provide an important connection to nature and bring joy and comfort as well as being vital for our mental health and wellbeing.

Hundreds of thousands of people across the UK will celebrate their love of nature and unite to watch and count the nation's garden birds over the last weekend in January for the RSPB's Big Garden Birdwatch, and the RSPB are counting on Merseyside residents to join in too.

This year, we've seen how important the natural world is to our mental health and wellbeing. There has been a surge in interest in the nature on our doorsteps and many people have come to rely on garden birds to bring joy and comfort in these unsettling times.

This year's event takes place on 29, 30 and 31 January 2021. Merseyside residents are asked to spend just one hour watching and recording the birds in their garden, balcony or local park, then send their results to the RSPB. Close to half-a-million people join in the Birdwatch every year.

Just one hour every year, for the last four decades, has made the RSPB's Big Garden Birdwatch the largest garden wildlife citizen science project. Now in its 42nd year, 144 million birds have been counted giving the RSPB an astonishing amount of insight into how our wildlife is faring.

Beccy Speight, the RSPB's Chief Executive, said: "We know that for many people, garden birds provide an important connection to the wider world and bring enormous joy. Lockdown brought few benefits, but the last year has either started or reignited a love of nature for many people. There has been a broad and much-needed realisation that nature is an important and necessary part of our lives especially for our mental health and wellbeing. But nature needs us too.

"By taking part in the Birdwatch, you are helping to build an annual snapshot of how our birdlife is doing across the UK. It is only by us understanding how our wildlife is faring that we can protect it. We know that nature is in crisis but together, we can take action to solve the problems facing nature."

For four decades, Big Garden Birdwatch has highlighted the winners and losers in the garden bird world. The house sparrow remained at the top of the Big Garden Birdwatch rankings as the most commonly seen garden bird with nearly 1.3 million sighted in 2020. Starling held down the second spot once more, with the blue tit completing the top three.

While house sparrows and starlings may be the UK's most commonly sighted birds, a closer look at Big Garden Birdwatch data shows that numbers have in fact dropped dramatically since the Birdwatch began in 1979. House sparrows are down 53% while starlings are down 80%. It's a pattern echoed by two more garden favourites, with blackbirds and robins down 46% and 32% respectively.

To take part in the Big Garden Birdwatch 2021, watch the birds in your garden or local park for one hour at some point over the three days. Only count the birds that land, not those flying over. Tell us the highest number of each bird species you see at any one time – not the total you see in the hour.

The parallel event RSPB Big Schools' Birdwatch takes place during the first half of spring term, 6 January – 21 February 2021. This year, it celebrates its 20th anniversary of connecting children with nature in their school grounds. Since its launch, over a million school children and teachers have taken part. Further information can be found at www.rspb.org.uk/schoolswatch

For your FREE Big Garden Birdwatch guide, which includes a bird identification chart, top tips for your birdwatch, RSPB shop voucher, plus advice on how to help you attract wildlife to your garden, text BIRD to 70030 or visit www.rspb.org.uk/birdwatch

Registration for Big Garden Birdwatch 2021 opens 9 December 2020.

The Rotary Club of Birkenhead

Telephone Club Secretary on

0151 336 7528



A TRIBUTE TO A VERY SPECIAL BIRKENHEAD ROTARIAN



One of those social or perhaps vocational events was a Rotary group tour of Liverpool Football Club and Allan is pictured during that visit, which, as a great supporter of the LFC, he would not miss!



Countless donations have been received, quite often encouraged via the community page in the Love Wirral magazine, provided to the Club. On one particular occasion this included an amazing donation of £5,000.

ROTARIAN Allan Williams, who died very suddenly in November, is pictured above far right a couple of years ago, providing support when Birkenhead Rotary made its annual visit to Claire House Children's Hospice.

Rotarians across Wirral and beyond, along with Allan's many friends, were saddened to receive the terrible news that Allan had died. With his wife Maxine, who is also a Rotarian and their son Michael, they produce the Love Wirral Magazine.

Some of the words used to describe Allan included,

*"pillar of our community",
"a proud Rotarian",
"an amazing friend".*

Allan managed to combine fun with kindness and support, whether an organisation, business colleague or just someone who needed some help and advice. Allan's family all embraced the ideals of Rotary, supporting many fundraising and social occasions.



Allan's family have requested that anyone wishing to donate in memory of Allan can do so via the following link;

<https://www.charles-stephens.com/funerals/allan-roy-williams/>

Or send cheques payable to: Rotary Club of Birkenhead, via Charles Stephens, 146 Allport Road, Bromborough CH62 6BB.

www.BirkenheadRotary.org

FIRES & STOVES



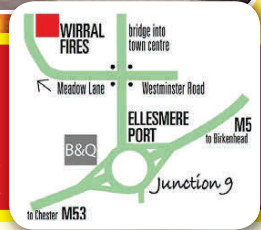
- Free Surveys
 - Bespoke Service
 - Stoves
 - Fires
 - Fireplaces
 - Full Installation Service
 - Package Deals
 - New Exclusive Range in Store
- *Ex-Display Bargains**



"Please support your local family business"
"Covid-19 Secure"



Wirral Fires Unit 2, Canal Bridge, Enterprise Centre,
Meadow Lane, Ellesmere Port, CH65 4EH.
info@wirralfires.co.uk



WIRRAL FIRES
LTD

0151 357 2524
www.wirralfires.co.uk



Trousers
Was £49
Now £29
or 2 for
£50

HAPPY & HEALTHY
NEW YEAR
TO YOU ALL



Was £25
Now
£15 each
or 2 for £25



Grey
Puffa
Was £69
Now £39

MUNROS

MENSWEAR-SUIT HIRE

240 Wallasey Village - CH45 3LP



Wedding
Suit Hire
& Sales



0151 638 3743 info@munrosmenswear.co.uk

www.munrosmenswear.co.uk

LOSE WEIGHT FAST & SAFE



REACH YOUR WEIGHT LOSS

Pay full price for a weekly treatment and get **50% OFF** a second treatment (within the same week)

**SPECIAL OFFER
FREE ASSESSMENT
BOOK NOW**

WE CAN'T DO
MAGIC
BUT WE CAN
TRANSFORM
YOUR
BODY IN
WEEKS



IAN LOST
5 ST, 4 LBS
IN ONLY
12 WEEKS

OUR DIET MEALS, DRINKS
AND SNACKS CAN NOW BE
ORDERED ONLINE, WITH FREE
DELIVERY UK WIDE.
ONLY AROUND £3 PER MEAL.
SEE OUR WEBSITE FOR
FURTHER DETAILS.

Ziba CLINICS
LIVERPOOL
ALEVURE
THERAPY



JO LOST
4 ST, 8 LBS
IN ONLY
21 WEEKS

Suite 4 Dovecote Court, Stanley Grange, Ormskirk Road, Knowsley, Merseyside, L34 4AR

Telephone: 0151 214 3211

www.ziba-slim.com | Email: info@zibaclinics.co.uk



dental solutions

We **LOVE** to make you **SMILE...**

BESPOKE DENTURES

Natural looking dentures beautifully created just for you
We believe in treating our clients with dignity and discretion

IMPLANT RETAINED DENTURES

Many patients who have chosen to have implants, report they are happy and comfortable for the first time since the loss of their natural teeth.

WHAT OUR CLIENTS SAY

“The moment I met Philip and his team I knew I was in safe hands. Everyone was patient, caring and professional.”

Doreen - Wirral



CALL US TODAY

0151 678 9833

PLEASE CALL US FOR A FREE CONSULTATION



Smile we're local
Junction 3 M53

Dental Solutions Denture Clinic
399 Upton Road Prenton Wirral, CH43 9SE
www.dentalsolutions.co

INTERNATIONAL WALK YOUR DOG MONTH

January is International Walk Your Dog Month so get up off the sofa and start walking off those festive treats! The benefits of walking on both your physical and mental health are well documented, but it is also an absolutely essential part of your dog's wellbeing. Dogs need physical exercise every day as well as the mental stimulation it provides. Beat the January blues by getting out there every day. Even on cold or wet days a short 'sniff' walk around the block makes a big difference.

Yvonne Jones, owner-operator of the Merseyside branch of Dog First Aid explains the impact of walking on her own mental health:

"Walking your dog is a great antidote to the misery of covid restrictions. Not only are you able to get out of the house and get some fresh air and exercise, but you can meet other walkers. As long as you follow the rules and keep a safe distance it is lovely just to be able to pass the time of day with another human! Humans and dogs are social animals. Just a small amount of daily contact in this way is really rewarding."

Yvonne is the owner of two mixed breeds, Chewie and Indy. She also understands first hand the importance of being safe while you're out walking your dog:

"Both of my dogs are rather accident-prone! Luckily I'm well versed in canine first aid because I've had to put my knowledge into practice on a number of occasions. I would definitely advise all dog owners and walkers to carry a first aid kit with them and also to have the knowledge of what to do in an emergency.



Both of my dogs will eat anything they can find, however unsuitable! Whether it's choking, poisoning or any other emergency, it's important to know what to do and to be able to act quickly."

Make it a New Year's resolution to get out and about more with your furry friend, being secure in the knowledge that you are prepared for any mishap. Dog First Aid courses, online or in-person, cover everything from the basics of checking dogs' vital signs to how to deal with bleeding, poisoning, choking, burns and much more, with the latest CPR techniques demonstrated on dog dummy, Cassie.

Dog First Aid are the only qualified UK company to offer the Continued Professional Development (CPD) accredited Emergency Canine Care™ (ECC) Course and to be approved by Trading Standards.

You can get in touch with Yvonne and learn more by visiting www.dog-first-aid.com/merseyside/, emailing merseyside@dog-first-aid.com or calling 07425 195794



Support Workers needed!

Affinity Trust are a national charity that provides support to adults with learning disabilities and mental health needs.

Have you got a background supporting people with learning disabilities, complex mental health needs and challenging behaviours? Then we want you to join our team! We are recruiting Positive Behaviour Support Workers in one home in the Hope Farm area of Ellesmere Port.

Our Positive Behaviour Support Workers use the principles of Positive Behaviour Support to reduce the occurrence of behaviours that challenge. **PROACT-SCIPr-UK®** training is provided as part of the induction, as well as training for keeping yourself and others safe.

This home helps people transition from a residential setting into a supported living environment to provide assistance in living a more active and independent lifestyle



Visit affinitytrust.org/jobs to apply, or email lucywhite@affinitytrust.org for more information.

HELPING HEDGEHOGS IN THE GARDEN

FACT FILE

If your dog has fleas – don't blame the hedgehogs in your garden. Hedgehog fleas can only survive by living on hedgehogs!

If you've got a garden, hedgehogs are useful visitors. They will eat slugs, beetles, caterpillars and a variety of other insects.

To attract hedgehogs to your garden you can try providing a natural shelter using log, leaf and compost piles (always check before moving the pile or having a bonfire) or allow patches of bramble to grow up, creating 'wild' areas. You could also place a piece of board against a pile of bricks to form a type of bivouac or buy a purpose built hedgehog house.

Hedgehogs can travel around a mile every night so, to provide access to enclosed gardens, try cutting holes in fences, removing bricks from walls, or digging tunnels under the garden boundary.

This will allow local hogs to move freely in and out of your garden. Food and fresh water laid out between February and October will encourage visiting hedgehogs to return regularly. You could try leaving out food such as minced meat, fresh liver, tinned dog food (not fish-based), or even scrambled eggs. Remember to check and replace the food and water daily and dispose of food if not eaten.

Hedgehogs like milk but it may give them diarrhoea. So it's best to give hedgehogs plain, fresh water each night in a shallow bowl. They should never be given cows' milk.



Hedgehog friendly gardening...

GARDEN PONDS can be death traps to small animals – make sure there is always an easy route for hedgehogs to climb out of the water. Steps built out of house brick or wire mesh are often used in ponds. Alternatively, make sure the pond has a gentle slope on at least one side. Ideally, swimming pools should have shallow steps and a tight-fitting insulating cover should be used overnight. Remember to check your pond or pool every day!

STRIMMERS should be used sparingly under hedges and in other areas of undergrowth and always make sure you check any areas you want to cut or trim before starting – hedgehogs and other animals are likely to be resting there during the day.

DRAINS and similar open holes frequently trap unwary hedgehogs and they can starve if they are not rescued. Keep all drain covers in good condition and cover any open holes.

LITTER is a real hazard – hedgehogs frequently get their heads stuck in tins, plastic bags, binders from drinks cans or discarded yoghurt pots – make sure you dispose of your rubbish safely. Bin bags left on the ground will also attract hedgehogs, they might try to nest in them and get put out with the rubbish!

NETS particularly those used for tennis, football or cricket, must be furled well above the ground when not in use – hedgehogs often get entangled and die of starvation. Fruit nets are a similar source of danger but can be kept taut to stop animals getting entangled. Make sure all barbed wire is also kept off the ground.



10 different hedgehogs may visit a garden over several nights, which could mean that 'your hedgehog' may in fact be a number of different individuals visiting at different times.

FACT FILE

Please help our little friends.



LHL GARDEN SERVICES

Over 30 Years Experience in Professional Gardening & Landscaping

Are you looking for a gardener?

Will they do a good job?

How will you know?

To see how good WE are, check out our YouTube or Instagram



LHL.Garden.Services



LHL Garden Services



LHL Garden Services

#listentolee

**Call Lee
on 07425 159788**

Local Trustworthy Experienced Landscape Gardener

Quality work | Attention to detail | Insured



Fencing
Gates
Sheds & Log Stores
Decking
Paths & Patios

Justfencing

C H E S H I R E

Installers of quality timber fencing

FREE NO OBLIGATION QUOTES

0151 336 7598 / 01244 470 120 / 07957 349 244

www.justfencingcheshire.co.uk





ELLIOTT
BUILD & GLAZE LTD

Tel: 0151 336 6925



Conservatory Erectors

Window Installers & Glaziers



BUILDING

We understand the importance of achieving a customers vision and needs.

Every project is completed to the highest quality and customer satisfaction is imperative.

We aim to give customers confidence that we will keep disruption to a minimum and always work within a safe, clean and tidy environment.

GLAZING

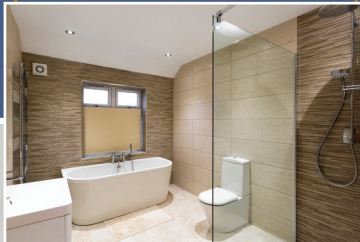
We are professional installers of windows, doors, bi folds and frameless glass extensions.

Elliott Build & Glaze Ltd is a Fensa registered company and we are able to provide a 10 year insurance backed guarantee.

PLANNING

From first contact with the customer to completion of the project, Elliott Build & Glaze Ltd can provide all services required to meet your needs, from full architectural design to the final fitting of the flooring. We aim make this experience as enjoyable and stress free as possible.

A family run business which has been built on recommendation



CUSTOMER RECOMMENDATIONS

Farrar - Greasby

"Both Alison and I would like you to pass on our thanks and best wishes to all of those involved at Elliott Build & Glaze Ltd in this project, as they have been very attentive and professional, as well as personable, throughout the project."

Forshaw/Murray - Bebington

We are very happy with all the work and the high standard that was attained.

O'Mally - Meols

"Scott and the team certainly gave us best in class service whilst they worked on our extension, kitchen and bathrooms. They kept us informed all the way and worked around our diaries to deliver the programme on time. We highly recommend them to anyone.

www.elliottbuildandglazeld.co.uk

Email: elliottbuildandglazeld@live.com

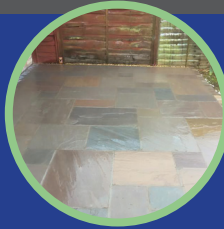


Ascot Paving

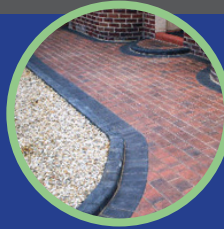
07761 595 033
0151 334 7596



Block Paving



Indian Stone



Decorative Stoning



Landscaping

Welcome to Ascot Paving Wirral. Established in 1983 and with over 20 years of experience in the landscaping trade, we specialise in all aspects of domestic paving and external construction work.

Have a paving enquiry or need a quote for gardening or any of our landscape service? Then get in touch today!

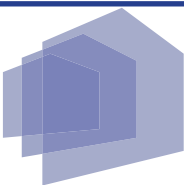
We are available 7 days a week throughout the Wirral region to help with all your landscape gardening and paving requirements.

All aspects of landscaping
Paving specialists
Domestic & commercial service
Free on-site quotes
No-obligation estimates
Efficient response & turnaround
Fully trained workmen
Exceptional local reputation



Email: darren.kavanagh@aol.com

www.ascotpaving.co.uk



astra

PROPERTY CARE LTD



BUILDING AND PRESERVATION SPECIALISTS

TRADING STANDARD MULTIPLE WINNERS FOR CUSTOMER SERVICE

We offer the complete building service

Planning from design to completion
Building regulations & permission obtained
Extension and loft conversions
Alterations & repairs / Structural repairs
Damp & timber treatment
Insurance backed guarantees

QUALITY | HONESTY | RELIABILITY
PROFESSIONALS YOU CAN RELY ON



Telephone: 0151 327 4871

www.astra-property-care.com

Call us on:
0151 327 8095

PURE
CONSERVATORIES

CONSERVATORIES | ORANGERIES | REPLACEMENT GLASS | LOCKS

BEFORE EXTENSION INSTALLED



The only system that comes with planning consent.

Call us today for a **FREE** quotation.

We are working safely during coronavirus (COVID-19)



Let us transform your home into an all year round living space

Leka Xi Modular Wall & Base System.



AFTER EXTENSION INSTALLED

A local family run firm you can trust

Email: sales@pureconservatories.co.uk

www.pureconservatories.co.uk

DURABASE

Advanced Base and Wall Systems for Conservatories

5 SIMPLE STEPS To achieve your DREAM ROOM

HOMEOWNERS

With no need for a forklift, digger or skip means less mess and waste to deal with. In addition to that the cheaper cost when compared to traditional methods means Pure Conservatories offers homeowners a building system that delivers more.

HOME EXTENSIONS | GARDEN ROOMS



1

Install the concrete pads for the base, note no mess made.



2

Lay down the steel base and level using adjustable legs then fix to the house.



3

Attach the brick and modular wall to the steel base and finish by insulating and electrics.



4

You're fully erected conservatory is now complete with our lightweight roof tiles.

FINISHED RESULT INSIDE

5

Your Dream Room is now complete with plastering, lighting and electrics completed to your specifications.



www.pureconservatories.co.uk

Amazing offers to keep you warm this winter!

COAL - Not Suitable For Smoke Controlled Areas

Premium House Coal	50kg - Open Sack	£21.00
House Coal	10kg Bag	£4.10
House Coal	20kg Bag	£8.20

SMOKELESS

Smokeless Fuel	50kg - Open Sack	£24.57
Brazier	10kg Bag	£5.75
Brazier	20kg Bag	£11.50
Home Fire	10kg Bag	£6.15
Home Fire	20kg Bag	£12.30
Anthracite Small Nuts	25kg	£14.99
Anthracite Large Nuts	25kg	£14.99
Homefire E-Coal50	20kg Bag	£13.50
Homefire E-Coal	Instant Light Bags	£5.49

LOGS, KINDLING & ECO FUEL

Logs, Kindling & Eco Fuel		
Homefire Firelighters		£1.50
Homefire Twizler Firelighters		£2.20
Kindling Bag		£2.95
Logs in Netted Bags		£4.99
Hardwood Seasoned Logs Jumbo Bag		£95.00
Hardwood Kiln Dried Logs		£15.50
Homefire Shimada Heatlogs		£4.95

FREE LOCAL DELIVERY!



0151 327 5555 | wirral_depot@cedstone.co.uk | www.corfestone.com

 @CEDNaturalStone

 @CED.Ltd.Natural.Stone

 @ced_stone_group

Do you or does someone you know need some Extra Help?



Are you living on your own and finding things difficult?
 Getting older and finding everyday tasks harder?
 Need some help getting to the Dr or to hospital appointments?

We can help by providing friendly, professional, reliable, police checked carers.
 Call us now and let us provide a helping hand.

Tel 0151 380 0300 www.extra-help.co.uk

We are working safely during coronavirus (COVID-19)

Our services include:

- Meal preparation
- Shopping and errands
- Ironing
- Escorts (Bingo, hospital etc)
- Regular or one-off services
- Dog walking
- Senior sitting
- Cleaning

From £14.00 per hour

TRADING STANDARDS APPROVED
 Business Approval Booster.com



EXTRAHELP®
 a helping hand

• Higher • Safer • Cleaner

Great Cleaning

Results, Totally Safe & Kind to the Environment

Heated Pure Waterfed Pole System

100% PROFESSIONAL DOMESTIC & COMMERCIAL WINDOW CLEANERS

A family run business for over 35 years

- Water Fed Pole & Traditional Window Cleaning
- Windows
- Conservatories
- Fascias
- Cladding
- Gutters



Staybright

T: 0151 201 8527

M: 07957 560060

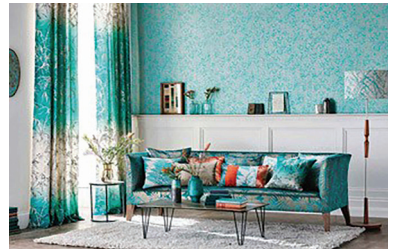
Email: staybrightwindowcleanerswirral@hotmail.com

50% OFF
 When you recommend a friend!



BILLY HILL INTERIORS

CURTAIN DESIGN STUDIO



♥ bespoke curtains, blinds and soft furnishings

♥ excellent choice of fabrics and wallpaper

♥ extended curtain showroom - new interiors coming soon

♥ free home design service

8-10 The Rake, Bromborough, Wirral CH62 7AD

www.billyhills.co.uk Email: billyhilltextiles@yahoo.co.uk



hillsinteriors


TELEPHONE: 0151 334 2266

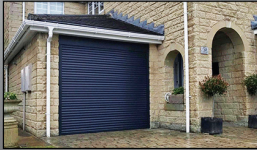
billyhilltextiles





ROLL RIGHT LTD
ROLL THE RIGHT WAY

- * Fully Electric
- * Disposal Of Old Door
- * Insulated & Secure
- * Available in 15 Colours
- * Comes With 2 Key Fobs
- * Made To Measure 



Fitted From

£695

Call Today For Your Free Quote & Survey

01430 871 161

07376 139 993

info@rollrightltd.co.uk

Manufacture & Installation of purpose made joinery products. Quality Assured Improvements

Traditional Values

MIKES JOINERY LTD

Modern Approach

STATION APPROACH, PASTURE ROAD, MORETON, CH46 8SD
TEL: 0151 604 0549 MOBILE: 07881 524 946

E-MAIL: mikesjoinery@hotmail.com

WEBSITE: www.mikesjoinery-wirral.co.uk

**JOINERY MANUFACTURERS
GATES/DOORS/WINDOWS Etc.
PURPOSE MADE JOINERY**



Comley
FENCING

**MANUFACTURERS, SUPPLIERS AND
INSTALLERS OF QUALITY FENCING.**

- FENCING
- SHEDS
- PAVING
- CONCRETE
- TURFING
- POSTS/BASE

OPEN TO THE PUBLIC/TRADE

FREE QUOTE
CALL 01244 534444
MOBILE 07555 490375

The Old Stables, Station Road,
Sandycroft, CH5 2PT

Email: comleypaving@hotmail.com



ASPINALLS SELF STORAGE CENTRE

CARAVAN, MOTORHOME BOAT & VEHICLE STORAGE

Caravans upto 22 ft £40.00 per month
Over 22 ft £50.00 per month
All prices include vat no tie/easy terms

SECURE STORAGE UNITS

8 x 5 ft £40.00 per month
8 x 6 ft £60.00 per month
8 x 10 ft £72.00 per month
20 x 8 ft £108.00 per month



Our self-storage site access is easy through our large modern gates which work via your mobile phone with flood lighting and remote monitoring through the dozens of cctv cameras the site is both Easy to Access and Secure.

www.aspinallsstorage.co.uk

Aspinalls Storage, 26 Tarran Way West, Moreton, Wirral CH46 4TT

Telephone: 0151 606 9586

Chiroprody Treatments are available at
Swettenhams Chemist
18 Allport Lane, Bromborough
0151 334 2020
&
Nail Heaven
56 Telegraph Road, Heswall
0151 342 9099

*Healthy Feet
are
Happy Feet!*

Heather Ratcliffe
M.Inst.Ch.P
HCPC Registered



CHIROPODIST
HEATHER RATCLIFFE



GIVE YOUR FEET A TREAT

Specialising in offering a qualified, experienced and friendly service.

FULL TREATMENT INCLUDES:

- Soothing Foot-Bath
- Shaping of Nails
(including ingrowing nails)
- Removal of Hard Skin & Corns
- Relaxing Foot Massage

HOME VISITS AVAILABLE
ask for details



Should you wish to make an appointment please telephone any of the numbers

Home visits: 07939 236 656

SIGNS EXPRESS®

Vehicle Graphic Specialists
& Sign Manufacturers

- Vehicle Wrapping
- Interior/Exterior Signs
- Window Graphics
- Plaques
- Exhibition Displays
- Promotional Banners
- Digital Printing & Labels



Tel: 0151 334 7474

www.signsexpress.co.uk/liverpoolnorth
2 Hawkhead Road, Croft Business Park
Bromborough, Wirral CH62 3RJ

f Signs Express Liverpool North & Wirral @SignsExpressLW

LPW PLUMBING SERVICES

Your Local Emergency Plumber

- 24 HOUR PLUMBING
- ALL GENERAL PLUMBING REPAIRS UNDERTAKEN
- PLUMBING MAINTENANCE
- ALL BLOCKAGES
- BATHROOM DESIGN & INSTALLATION
- ALL WORK FULLY INSURED

WIAPS - Water Industry Approved Plumbing Scheme

24hr 07738 462315

www.lpwplumbingservices.co.uk

info@lpwplumbingservices.co.uk



BROWSERS EMPORIUM

www.browsersemporium.com

It's an Aladdins Cave of Treasures

You name it and we've probably got it!



**Order Online
Click + Collect
Please phone
for assistance**



All types of new & second-hand furniture & fittings to browse under one roof!

From bulbs to lights, door handles to doors & stools to tables!



Hooton Works, Hooton, Wirral (Junction 5 - M53) off A41 to Chester Next to Corfe's

Tel: 0151 328 1467

Open: Mon-Sat from 9am - 5pm



All credit cards accepted

Homecare

Whether it's a little, or it's a lot, personal care and help in the home provides customers with the support they need when they need it most in a package designed

Home Helps

Whether it's a little, or it's a lot, personal care and help in the home provides customers with the support they need when they need it most in a package designed

Live-in Care

Whether it's a little, or it's a lot, personal care and help in the home provides customers with the support they need when they need it most in a package designed

BRINGING BACK Home Helps!



KARE PLUS
Home Help

Here to support with **day-to-day tasks** so you can focus on what's **important to you**

Home Help services include:

Cleaning • Preparing Food • Dog Walking • Ironing • Shopping • Light Gardening

FREE ASSESSMENT NO OBLIGATION

Free Assessment fully tailored to your needs and requirements undertaken from our friendly team of professional and experienced home carers.



Professional, local, quality homecare at affordable prices

Inspected and rated

Good



Contact our dedicated team today

Call 0151 650 5501



Organically grown, delivered veg boxes

From

Bridge Community Farms

Bridge Community Farms supports those coping with mental health and learning difficulties in the therapeutic environment of our 10 acre farm in Ellesmere Port. We also create jobs for the long term unemployed growing gorgeous veg, salads, herbs and fruit in our fields and poly tunnels.



Visit
<https://bwgardens.co.uk/bridge-community-farms>
 And click **SIGN UP NOW**
 Or email
bridgevegbox@gmail.co.uk

Veg Box

£11.50
Free delivery

Small

1-2 people

At least six varieties of fresh organically grown veg usually including a core of potatoes and carrots. The boxes also include recipe suggestions.

Veg Box

£16.50
Free delivery

Medium

2-3 people

At least eight varieties of fresh organically grown veg usually including a core of potatoes, onions and carrots. The boxes also include recipe suggestions.

Veg Box

£18.50
Free delivery

Bumper

3-4 people

Eight varieties of fresh organically grown veg that usually includes a core of potatoes, onions and carrots, in bigger portions. The boxes also include recipe suggestions.

Alternative boxes available for **Small**, **Medium**, and **Bumper** veg boxes

Salad box

£12.00
Free delivery

2-3 people

Six varieties of fresh organic veg ideal for all kinds of salads. Lots of leaves, lettuce and tomatoes that are great for side salads or lighter meals.

Fruit box

£10.50
Free delivery

2-3 people

A minimum of four varieties of tasty organically grown fruit one of which will usually be bananas.

Fruit Box

£15.00
Free delivery

Bumper

3-4 people

A minimum of FIVE varieties of tasty organically grown fruit, one of which will usually be bananas.

STUART **S** HENRY KITCHENS LTD



Multi Award Winning family run business with 30 years experience.



We pride ourselves on offering unrivalled advice and service, we will design your kitchen free of charge with materials from our premier partners.



Our vast experience in not only designing kitchens but cooking in them as well enables us to design the perfect kitchen to suit your lifestyle and cooking needs.

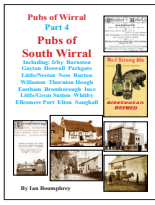
1 The Rake Precinct, Bromborough, Wirral CH62 7AD
Phone 0151 334 7775 | www.stuarthenrykitchens.co.uk



Yesterday's Wirral Photos

Old Wirral photographs to bring back memories of a time gone by. You can see more in Ian's books at all good stores and Gordale Nurseries.

Yesterday's Wirral Books



Pubs of Wirral
by Ian Boumphrey

New Part 4: Pubs of South Wirral

- Part 1: Breweries of Birkenhead
- Part 2: Pubs of Birkenhead and area
- Part 3: Pubs of North Wirral

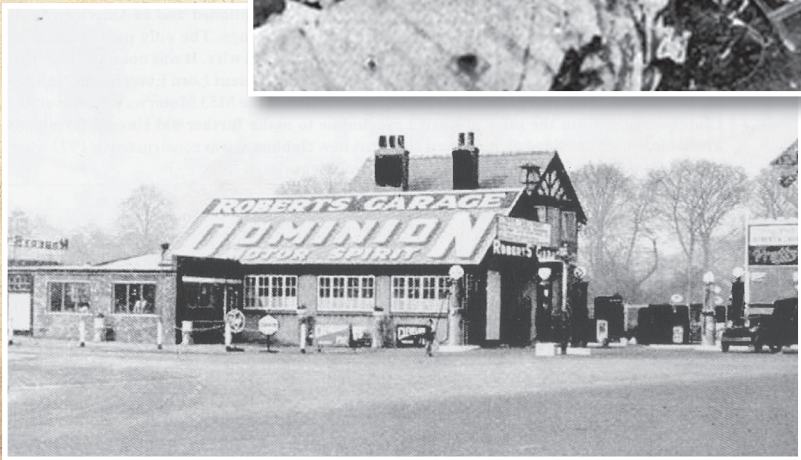


Also a range of Yesterday's Wirral books covering Wirral Most 128 pages - all still priced £9.95
For more information - email: ian@yesterdayswirral.co.uk
Web site: www.yesterdayswirral.co.uk or telephone: 0151 608 7611



Above: 1933. The Dee View Inn had become a Birkenhead Brewery Pub

Right: 17th June 1926 Pilot Officer Pentland's RAF bi-plane crash-landed onto Heswall Golf Course



Left: Roberts Garage pictured in 1933 on The New Chester Road and the corner of Allport Road, Bromborough. Now Texaco Garage.



Above: Looking from Chester Road down Station Road, **Little Sutton** Railway Station can be seen in the distance. Sutton Motor Company, who advertise as 'Automobile Engineers' and who are 'Commercial Vehicle Experts', are seen on the right. The Police station can be seen on the left with the flagpole in front, closed in 1947.



Above and far right: C1905. Looking down Ferry Road, **Eastham** with Lock Road on the right where the shed advertises a "covered bicycle stand". The pony and trap probably belonged to the photographer, F. Walker of Little Sutton, whose wife was sitting in the trap. The tea rooms, pictured above in Ferry Road, are here called Greenwoods, ready for any visitors to the Ferry from Liverpool and Seacombe.

Below: 1902. The beach at **New Brighton** was a popular place to be seen, wearing hat and dark clothes. Fort Perch Rock can be seen in the distance.



PORT SUNLIGHT RIVER PARK NAMED HEALTH SITE OF THE YEAR AT UK AWARDS



Port Sunlight River Park has been named Health Site of the Year by The Land Trust at its annual awards. Situated on the Wirral banks of the River Mersey, the popular and picturesque destination beat strong competition from a range of other landmarks and days out attractions to win the national prize.

The 70-acre site is managed by local charity Autism Together on behalf of The Land Trust, and was entered against over 40 of the organisation's other attractions, in locations across the UK.

The judges were very impressed by the wide range of health and well-being activities that took place at the River Park.

The judging covered a 12 month-period up to March 2020, and in this time the River Park team, headed up by Park Ranger Andrew Jennings-Giles, has offered many different opportunities for the community to access the park for health and recreation.

Andrew said: "We run healthy events and activities at the River Park to cater for a range of ages and abilities. "In particular, the judges picked out our Health Walks, run by dedicated volunteers, our Mindfulness in Nature courses, Community Walks as part of Wirral Walking Festival, Learn To Ride cycle sessions for local children delivered by Sustrans, and archaeology digs at the nearby Old Courthouse site led by Big Heritage.

"Also highlighted were the outdoor activities, work experience and craft activities for adults with autism we provide, led by Autism Together's Social Enterprise Team.

"It's also important to mention the thousands of hours of outdoor tasks done by our dedicated volunteers, and we thank all those visitors who enjoyed our River Park through walking, running, cycling and hiking up the hill for the fabulous views over the River Mersey and across to North Wales."

In a great night for the River Park, the team also claimed 2nd place in the Community Space of The Year category.

A former landfill, Port Sunlight River Park has been transformed over the last six years, with plants and wildlife flourishing at the site making for a wonderful destination for the public to explore and enjoy. Park Ranger Andrew continued: "Although, due to the pandemic, many of the River Park's social and community activities are paused for the moment, it's very important for our health and wellbeing to get outdoors and keep fit.

"Our site remains open for everyone to enjoy exercise and experience nature this autumn, while of course paying attention to social distancing and following all current guidelines.

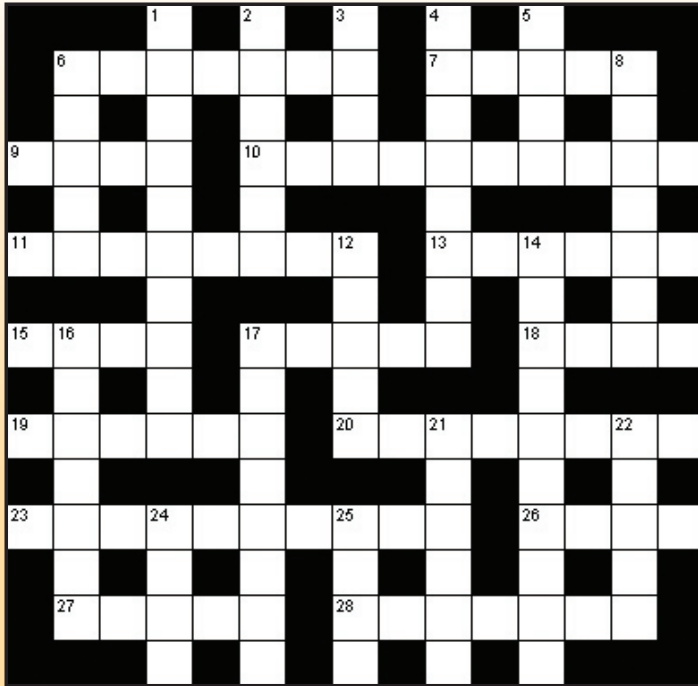
"Thank you to all our visitors for continuing to support the River Park this year."

To find out more about Port Sunlight River Park, visit their Facebook page: facebook.com/psriverpark, the website: www.thelandtrust.org.uk/port-sunlight-river-park, or email: River.Park@autismtogether.co.uk.

For more about Autism Together, visit the charity's website: www.autismtogether.co.uk or Facebook page: facebook.com/autismtogetheruk



PUZZLE CORNER



Down

1. Benevolences (10)
2. Decorate (6)
3. Profound (4)
4. Infractions (8)
5. Depressions (4)
6. North African country (5)
8. Rules (7)
12. Levees (5)
14. Underscores (10)
16. Singalong (7)
17. The head of an editorial page (8)
21. Least high (6)
22. Acclaim (5)
24. Pocketbook (4)
25. Fathers (4)

Across

6. Effeminate (7)
7. Wife of Odin (Norse mythology) (5)
9. Looked at (4)
10. Indicative of (10)

11. Marked with linear discolorations (8)
13. Wriggle (6)
15. Anagram of "Seek" (4)
17. Creates (5)
18. Thin flat circular plate (4)

19. Seizes (6)
20. Wages (8)
23. Bode (10)
26. Sickneses (4)
27. Mediterranean herbs (8)
28. Movement downward (7)

Sudoku Puzzle

How to play: The numbers 1 through 9 will appear once only in each row, column, and 3x3 zone. There are 9 such zones in each sudoku grid.

There is only one correct solution to each sudoku. Good luck!

Difficulty level: **Hard**.

Solutions can be found on our website:

			7				5	
					1	2	4	
1			6	9				
				2				
	2					5		4
	6	3	8			7		
6						9		
				3	4		6	5
	5							2

‘ENJOY A NEW HOME FOR THE NEW YEAR’ AT WIRRAL CARE HOME



A Wirral care is inviting anyone who is interested in moving to its home in the new year to get in touch and discover all the benefits it can bring to their lives.

The Hazelwell, a residential, residential dementia, nursing, palliative and respite care in Oldfield Road, says that finding the right care home for yourself or a loved one is a big decision but it should feel like a happy home-from-home choice.

January is usually a popular time for people to start seeking out a care home. The Hazelwell has strict infection control guidelines due to the Covid-19 pandemic which are being followed including use of PPE by all staff. When visits from family members are allowed, all visitors are required to wear full PPE, temperature checked and complete risk assessment.

The Hazelwell was one of the first care homes in the Wirral to close its doors on March 13 when the coronavirus outbreak started before the national lockdown was introduced 10 days later. The home did so, in order to create a 'cocooning environment' for its residents and keep those in their care safe.

The Hazelwell care home manager Sue Alexander said: "Firstly people often put these things off until Christmas is over, it's a new-year-new-home thing.

"Secondly, in the winter months often people find they get more poorly with winter bugs and a slow recovery might be the trigger that makes them think that they could do with living somewhere with a little bit more round the clock help on hand."

Whatever the reason for the move, Sue says that the move into a care home should not feel like a total upheaval if it is into the right home. "Here at The Hazelwell we aim to go above and beyond to make all residents feel as comfortable as possible," she added. "But especially our new residents. It's important that they have their much-loved home comforts and own routines."

The Hazelwell itself is well equipped to look after the needs of any resident with 55 en-suite rooms, spacious communal lounges, private secure gardens, a stunning rooftop terrace, as well as home cinema room and library.

The Hazelwell's activities co-ordinators craft a full and well-rounded programme tailored to the residents' interests and health needs, as well as the season.

With tastefully decorated dining rooms, The Hazelwell provides high quality food which can be matched to the individual resident's own nutritional needs. The home aims to take care of every aspect of each resident's personal wishes.

Sue added: "We run The Hazelwell as a real home-from-home and we care deeply for all our residents. Often our residents tell us they are so happy to feel safe and cared for, and enjoy being part of our family. Nothing could make us feel happier than hearing that."

For more information call The Hazelwell on 0151 342 9654, email info@thehazelwell.com or visit www.thehazelwell.com

FABULOUS KITCHEN MAKEOVERS

SAVE UP TO 50% ON THE COST OF A NEW KITCHEN



Fitted in one day

Professionally fitted,
no debris, no dust, no disruption



Worktops

Granite, quartz, recycled
glass & porcelain worktops



Doors

Over 100 combinations of
Made-to-Measure doors



KITCHEN & BATHROOM MAKEOVERS

For a free consultation call or visit trend-transformations.co.uk/ellesmereport

ELLESMERE PORT SHOWROOM: 0151 434 4880

Unit 17/18, Junction 8 Business Park
Rosscliffe Rd, Ellesmere Port, Cheshire CH65 5AA

BURTON DISPLAY: 0151 434 4880

Gordale Garden Centre, Chester High Rd
Burton, South Wirral, Chester CH64 8TF

Please see website for opening hours at each location